

Key for fingering notation.

b = flat (movement of the fingering position down - toward the nut - by one 1/2 step or semitone.)

= sharp (movement of the fingering position up - toward the bridge - by one 1/2 step or semitone.)

bb = double flat (movement of the finger position down by one whole step or one tone.)

x = double sharp (movement of the finger position up by one whole step or one tone.)

Alternative fingering options are presented underneath the primary position marking for some scales.

To use the alternative fingerings, place the fist finger on the marking in the paranthesis - (. For example, for the Gb Major Scale (b3): means to place your 1st finger on the flat 3 position. (For a video explanation, on playing in different position please see the video tutorial on www.amystudio.org)

Happy Practicing!!!

D Major

0 1 2 3 0 1 2 3 3 2 1 0 3 2 1 0

A Major

0 1 2 3 0 1 2 3 3 2 1 0 3 2 1 0

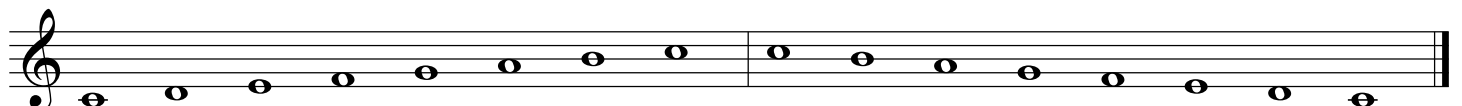
G Major

0 1 2 3 0 1 2 3 3 2 1 0 3 2 1 0

Bb Major

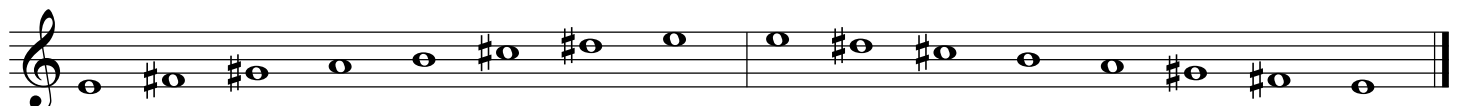
b2 3 0 b1 b2 3 0 b1 b1 0 3 b2 b1 0 3 b2

C Major




3 0 1 b2 3 0 1 b2 b2 1 0 3 b2 1 3 0

E Major




1 2 #3 0 1 2 #3 0 0 #3 2 1 0 #3 2 1

B Major



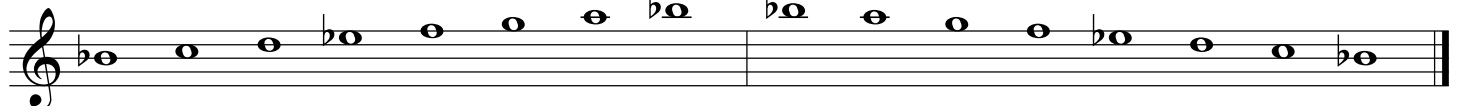
1 2 #3 0 1 2 #3 4 4 #3 2 1 0 #3 2 1

Eb Major



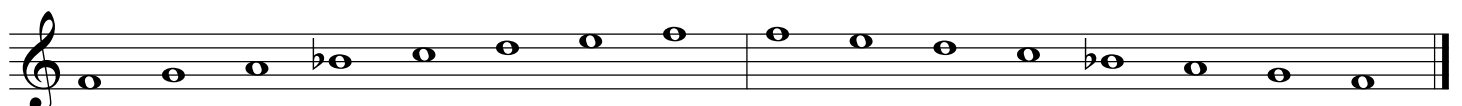
b1 b2 3 b4 b1 b2 3 b4 b4 3 b2 b1 b4 3 b2 b1

Bb Major



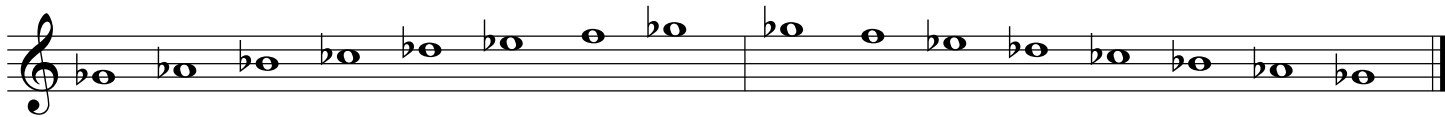
b1 b2 3 b4 b1 b2 3 b4 b4 3 b2 b1 b4 3 b2 b1

F Major



b2 3 0 b1 b2 3 0 b1 b1 0 3 b2 b1 0 3 b2

Gb Major



b3 b4 b1 bb2 b3 b4 b1 bb2 bb2 b1 b4 b3 bb2 b1 b4 b3
 (b3):1 2 #3 b4 1 2 #3 b4 b4 #3 2 1 b4 #3 2 1

Cb Major



b3 b4 b1 bb2 b3 b4 b1 bb2 bb2 b1 b4 b3 bb2 b1 b4 b3
 (b3):1 2 #3 b4 1 2 #3 b4 b4 #3 2 1 b4 #3 2 1

C# Major



#3 b1 2in#1 3in2 4in#3 b1 2in#1 3in2 3in2 2in#1 b1 4in#3 3in2 2in#1 b1 #3
 (#3):1 2 #3 4 1 2 #3 4 4 #3 2 1 4 #3 2 1

F# Major



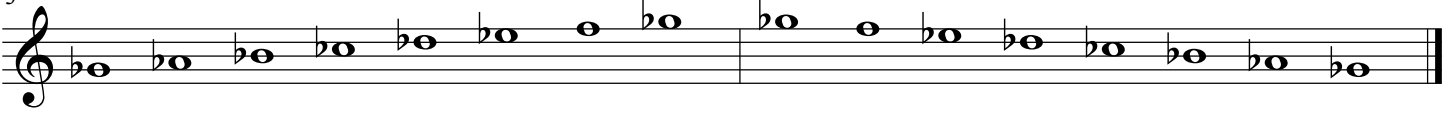
2 #3 b1 2in1 3in2 4in#3 b1 2in1 2in1 b1 4in#3 3in2 2in1 b1 #3 2
 (2):1 2 #3 b4 1 2 #3 b4 b4 #3 2 1 b4 #3 2 1

Ab Major



b4 b1 bb2 b3 b4 b1 b2 b4 b4 b2 b1 b4 b3 bb2 b1 b4
 (b1):1 2 #3 b4 1 2 #3 b4 b4 #3 2 1 b4 #3 2 1

3



b3 b4 b1 bb2 b3 b4 b2 bb3 bb3 b2 b4 b3 bb2 b1 b4 b3
(b3):1 2 #3 b4 1 2 #3 b4 b4 #3 2 1 b4 #3 2 1